

# ∞ Tilton Crafts ∞

## Counted Cross Stitch Chart



Oboro Sakuya

Stitch Count: 600 x 500

[www.TiltonCrafts.com](http://www.TiltonCrafts.com)

## Instructions

This design is recommended to be stitched over 1 on 25 count fabric, but you may use any count fabric that you are comfortable with. Traditionally, most will use 1 strand of floss for 22ct / 25ct / 28ct, and 2 strands of floss for 14ct / 16ct / 18ct. Charts are recommended to be stitched from page 1 top left to the last page bottom right. (see diagram below). Also, please take a moment to scan over your symbol list before you begin, as some symbols appear similar.

You may also use the tent stitch or full cross stitches depending on your preference. We want to thank you for purchasing this design and welcome any questions or comments that you may have at any time.

Website: [www.TiltonCrafts.com](http://www.TiltonCrafts.com)

Email: [Support@TiltonCrafts.com](mailto:Support@TiltonCrafts.com)

Start your stitching on Page 1 and continue over to Page 9. Page 10 will start below your Page 1 stitching. Page 19 will start below your page 10 stitching, and so forth.

Page 1	Page 2	Page 3	Page 4	Page 5	Page 6	Page 7	Page 8	Page 9
Page 10	Page 11	Page 12	Page 13	Page 14	Page 15	Page 16	Page 17	Page 18
Page 19	Page 20	Page 21	Page 22	Page 23	Page 24	Page 25	Page 26	Page 27
Page 28	Page 29	Page 30	Page 31	Page 32	Page 33	Page 34	Page 35	Page 36
Page 37	Page 38	Page 39	Page 40	Page 41	Page 42	Page 43	Page 44	Page 45
Page 46	Page 47	Page 48	Page 49	Page 50	Page 51	Page 52	Page 53	Page 54
Page 55	Page 56	Page 57	Page 58	Page 59	Page 60	Page 61	Page 62	Page 63

## **Cleaning & Care**

When handling any needlework, always take the special care that is necessary to keep your work clean. Wash hands frequently to prevent body oils from staining the fabric or cross stitching.

Be sure to remove your cross stitching from the hoop each time you stop stitching to prevent hoop marks from soiling your fabric.

It is recommended that you use approximately 18" lengths of thread when stitching your project. This will help to avoid knotting, twisting, or fraying of the thread while you work.

Your project should be stored in a bag or workbasket when not being stitched to protect it from dust, spills, etc.

## **Washing Instructions For Cross Stitch**

If you have followed the care instructions, you may not find it necessary to launder your piece before framing or finishing it. If, however, your piece has become soiled, wash it following the instructions below:

Always wash each cross stitch separately.

Wash your cross stitch in lukewarm water with a mild detergent or dishwashing liquid. Do NOT use Woolite, harsh detergents, or chlorine bleach.

Rinse cross stitch several times in clear water. Do not worry if water becomes colored when washing your piece – continue rinsing in clear water.

Roll the cross stitch between two clean towels squeezing gently without wringing – Do Not allow cross stitch piece to touch upon itself. Unroll towels and spread out piece flat to dry on a towel. Never leave damp cross stitch folded or in a heap.

To iron your piece, place the dry cross stitch face down between two clean towels and press with a warm, not hot, iron. To remove creases or fold lines from your piece, you may find it necessary to use the steam setting on your iron.

It is NOT recommended that Scotchgard or other products of this type be used on your projects as they may cause chemical reactions with your thread dyes.

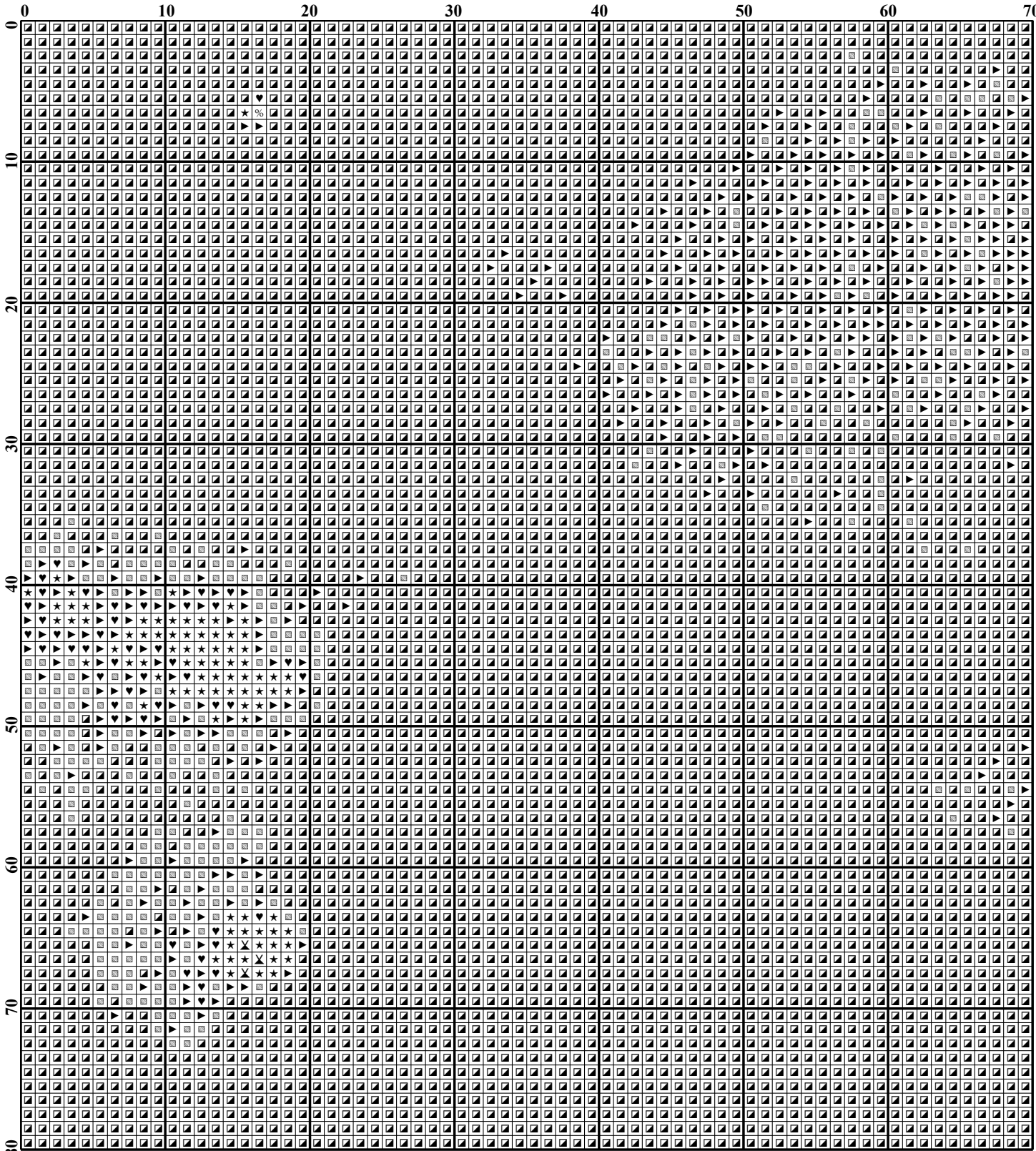
It is generally NOT recommended that your cross stitch be dry cleaned. However, certain fabrics (i.e. wools) may require dry cleaning. We suggest that you speak to your local dry cleaner, advising him that there may be a reaction between the thread dyes and the dry cleaning chemicals (i.e. benzene, trichlorethylene, etc).

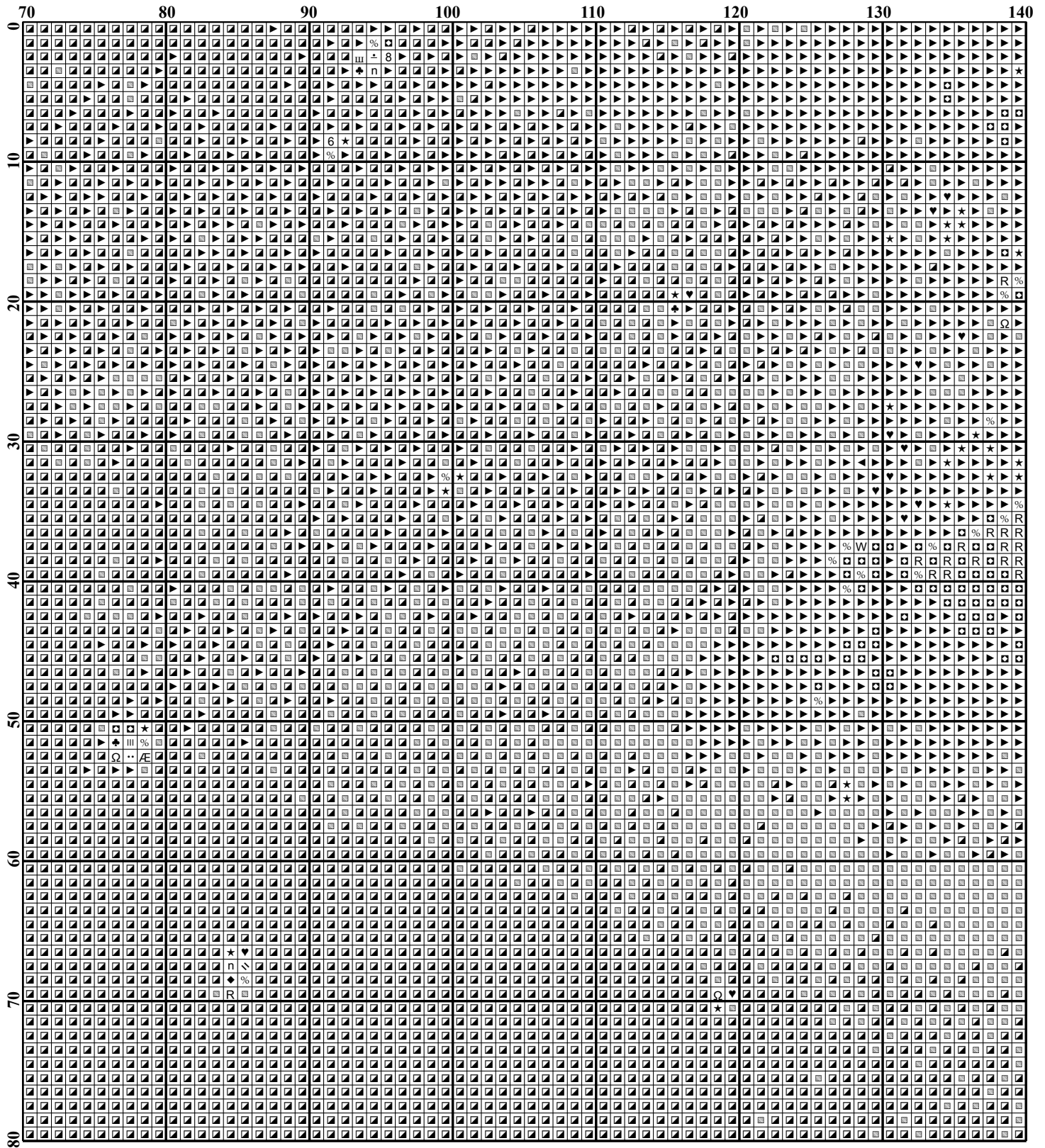
**Pattern Name:** Oboro Sakuya  
**Designed By:** Shelley Lee  
**Company:** Tilton Crafts  
**Copyright:** © 2013 Tilton Crafts – Artwork © Shu Mizoguchi  
**Fabric:** White - Evenweave, Linen  
**Stitch Count:** 600 W x 500 H  
**Size:** 25ct, 24" x 20"

Symbol	Type	Number	Color	Skeins
D	DMC	150	Dusty Rose-UL VY DK	1
□	DMC	153	Violet-VY LT	1
▤	DMC	154	Grape-VY DK	1
	DMC	155	Blue Violet-MD DK	1
\	DMC	156	Blue Violet-MD LT	1
M	DMC	158	Cornflower Blue-MD VY DK	1
↙	DMC	159	Gray Blue-LT	1
€	DMC	160	Gray Blue-MD	1
U	DMC	161	Gray Blue	1
™	DMC	169	Pewter-LT	1
3	DMC	208	Lavender-VY DK	1
◇	DMC	209	Lavender-DK	1
∞	DMC	210	Lavender-MD	1
▲	DMC	304	Christmas Red-MD	1
■	DMC	310	Black	1
✕	DMC	311	Navy Blue-MD	1
m	DMC	315	Antique Mauve-VY DK	1
5	DMC	317	Pewter Gray	1
●	DMC	319	Pistachio Green-VY DK	1
4	DMC	327	Violet-VY DK	1
↗	DMC	333	Blue Violet-VY DK	1
L	DMC	334	Baby Blue-MD	1
⌋	DMC	340	Blue Violet-MD	1
⌈	DMC	355	Terra Cotta-DK	1
✓	DMC	500	Blue Green-VY DK	1
6	DMC	517	Wedgewood-DK	1
▣	DMC	519	Sky Blue	1
S	DMC	520	Fern Green-DK	1
»	DMC	524	Fern Green-VY LT	1
::	DMC	550	Violet-VY DK	1
ˆ	DMC	552	Violet-MD	1
V	DMC	553	Violet	1
7	DMC	554	Violet-LT	1
•	DMC	561	Jade-VY DK	1
▲	DMC	597	Turquoise	1
&	DMC	604	Cranberry-LT	1
=	DMC	640	Beige Gray-VY DK	1
G	DMC	666	Christmas Red-BRT	1
▽	DMC	676	Old Gold-LT	1
◀	DMC	699	Christmas Green	3
O	DMC	700	Christmas Green-BRT	1
⋯	DMC	741	Tangerine-MD	1
I	DMC	747	Sky Blue-VY LT	2
»	DMC	779	Cocoa-DK	1

Symbol	Type	Number	Color	Skeins
9	DMC	792	Cornflower Blue-DK	1
@	DMC	793	Cornflower Blue-MD	1
♪	DMC	794	Cornflower Blue-LT	1
▣	DMC	796	Royal Blue-DK	2
R	DMC	797	Royal Blue	2
◆	DMC	798	Delft Blue-DK	1
⋈	DMC	799	Delft Blue-MD	1
★	DMC	803	Baby Blue-UL VY DK	2
◊	DMC	807	Peacock Blue	1
n	DMC	809	Delft Blue	1
◇	DMC	819	Baby Pink-LT	1
►	DMC	820	Royal Blue-VY DK	4
▤	DMC	823	Navy Blue-DK	4
8	DMC	825	Blue-DK	1
∴	DMC	826	Blue-MD	1
▥	DMC	827	Blue-VY LT	2
✖	DMC	832	Golden Olive	1
▼	DMC	838	Beige Brown-VY DK	1
⌘	DMC	890	Pistachio Green-UL DK	1
P	DMC	900	Burnt Orange-DK	1
C	DMC	905	Parrot Green-DK	1
⊗	DMC	909	Emerald Green-VY DK	1
Z	DMC	910	Emerald Green-DK	1
N	DMC	917	Plum-MD	1
†	DMC	930	Antique Blue-DK	2
3	DMC	931	Antique Blue-MD	1
≡	DMC	932	Antique Blue-LT	1
▣	DMC	939	Navy Blue-VY DK	5
J	DMC	943	Bright Green-MD	2
↗	DMC	958	Sea Green-DK	1
1	DMC	959	Sea Green-MD	1
▷	DMC	963	Dusty Rose-UL VY LT	1
*	DMC	964	Sea Green-LT	2
E	DMC	986	Forest Green-VY DK	1
§	DMC	992	Aquamarine-MD	1
W	DMC	995	Electric Blue-DK	1
T	DMC	996	Electric Blue-MD	1
△	DMC	3042	Antique Violet-LT	1
∠	DMC	3047	Yellow Beige-LT	1
«	DMC	3072	Beaver Gray-VY LT	1
▲	DMC	3325	Baby Blue-LT	1
—	DMC	3348	Yellow Green-LT	1
d	DMC	3607	Plum-LT	1
≡	DMC	3609	Plum-UL LT	1
A	DMC	3721	Shell Pink-DK	1
X	DMC	3722	Shell Pink-MD	1
⌚	DMC	3727	Antique Mauve-LT	1
BS	DMC	3743	Antique Violet-VY LT	1
☆	DMC	3747	Blue Violet-VY LT	1
♥	DMC	3750	Antique Blue-VY DK	3
⊗	DMC	3752	Antique Blue-VY LT	1

Symbol	Type	Number	Color	Skeins
III	DMC	3760	Wedgewood-MD	1
♣	DMC	3765	Peacock Blue-VY DK	2
III	DMC	3766	Peacock Blue-LT	1
■	DMC	3770	Tawny-VY LT	1
≥	DMC	3778	Terra Cotta-LT	1
X	DMC	3787	Brown Gray-DK	1
⌘	DMC	3799	Pewter Gray-VY DK	1
H	DMC	3803	Mauve-MD	1
2	DMC	3807	Cornflower Blue	1
Æ	DMC	3808	Turquoise-UL VY DK	2
Y	DMC	3810	Turquoise-DK	1
❖	DMC	3811	Turquoise-VY LT	1
K	DMC	3812	Sea Green-VY DK	2
r	DMC	3813	Blue Green-LT	1
◆	DMC	3814	Aquamarine	1
4	DMC	3815	Celadon Green-DK	1
Г	DMC	3816	Celadon Green-MD	1
b	DMC	3832	Raspberry-MD	1
a	DMC	3835	Grape-MD	1
h	DMC	3836	Grape-LT	1
e	DMC	3837	Lavender-UL DK	1
:	DMC	3838	Lavender Blue-DK	1
/	DMC	3839	Lavender Blue-MD	1
¢	DMC	3840	Lavender Blue-LT	1
%	DMC	3842	Wedgewood-DK	3
+	DMC	3844	Bright Turquoise-DK	2
#	DMC	3845	Bright Turquoise-MD	1
⌌	DMC	3846	Bright Turquoise-LT	4
Ω	DMC	3847	Teal Green-DK	5
Π	DMC	3848	Teal Green-MD	1
B	DMC	3850	Bright Green-DK	1
”	DMC	3851	Bright Green	1
F	DMC	3860	Cocoa	1
¥	DMC	3861	Cocoa-LT	1
♡	DMC	3865	Winter White	2







	140	150	160	170	180	190	200	210
0	140	150	160	170	180	190	200	210
10								
20								
30								
40								
50								
60								
70								
80								

[illegible]

[illegible]

	350	360	370	380	390	400	410	420
0	□	□	□	□	□	□	□	□
10	□	□	□	□	□	□	□	□
20	□	□	□	□	□	□	□	□
30	□	□	□	□	□	□	□	□
40	□	□	□	□	□	□	□	□
50	□	□	□	□	□	□	□	□
60	□	□	□	□	□	□	□	□
70	□	□	□	□	□	□	□	□
80	□	□	□	□	□	□	□	□

	420	430	440	450	460	470	480	490
0	W	W	W	W	W	W	W	W
10	W	W	W	W	W	W	W	W
20	W	W	W	W	W	W	W	W
30	W	W	W	W	W	W	W	W
40	W	W	W	W	W	W	W	W
50	W	W	W	W	W	W	W	W
60	W	W	W	W	W	W	W	W
70	W	W	W	W	W	W	W	W
80	W	W	W	W	W	W	W	W

[illegible]

[illegible]

[illegible]



[illegible]

	140	150	160	170	180	190	200	210
80	140	150	160	170	180	190	200	210
90	90	90	90	90	90	90	90	90
100	100	100	100	100	100	100	100	100
110	110	110	110	110	110	110	110	110
120	120	120	120	120	120	120	120	120
130	130	130	130	130	130	130	130	130
140	140	140	140	140	140	140	140	140
150	150	150	150	150	150	150	150	150
160	160	160	160	160	160	160	160	160

[illegible]



	350	360	370	380	390	400	410	420
80	Q	Q	Q	Q	Q	Q	Q	Q
81	Q	Q	Q	Q	Q	Q	Q	Q
82	Q	Q	Q	Q	Q	Q	Q	Q
83	Q	Q	Q	Q	Q	Q	Q	Q
84	Q	Q	Q	Q	Q	Q	Q	Q
85	Q	Q	Q	Q	Q	Q	Q	Q
86	Q	Q	Q	Q	Q	Q	Q	Q
87	Q	Q	Q	Q	Q	Q	Q	Q
88	Q	Q	Q	Q	Q	Q	Q	Q
89	Q	Q	Q	Q	Q	Q	Q	Q
90	Q	Q	Q	Q	Q	Q	Q	Q
91	Q	Q	Q	Q	Q	Q	Q	Q
92	Q	Q	Q	Q	Q	Q	Q	Q
93	Q	Q	Q	Q	Q	Q	Q	Q
94	Q	Q	Q	Q	Q	Q	Q	Q
95	Q	Q	Q	Q	Q	Q	Q	Q
96	Q	Q	Q	Q	Q	Q	Q	Q
97	Q	Q	Q	Q	Q	Q	Q	Q
98	Q	Q	Q	Q	Q	Q	Q	Q
99	Q	Q	Q	Q	Q	Q	Q	Q
100	Q	Q	Q	Q	Q	Q	Q	Q
101	Q	Q	Q	Q	Q	Q	Q	Q
102	Q	Q	Q	Q	Q	Q	Q	Q
103	Q	Q	Q	Q	Q	Q	Q	Q
104	Q	Q	Q	Q	Q	Q	Q	Q
105	Q	Q	Q	Q	Q	Q	Q	Q
106	Q	Q	Q	Q	Q	Q	Q	Q
107	Q	Q	Q	Q	Q	Q	Q	Q
108	Q	Q	Q	Q	Q	Q	Q	Q
109	Q	Q	Q	Q	Q	Q	Q	Q
110	Q	Q	Q	Q	Q	Q	Q	Q
111	Q	Q	Q	Q	Q	Q	Q	Q
112	Q	Q	Q	Q	Q	Q	Q	Q
113	Q	Q	Q	Q	Q	Q	Q	Q
114	Q	Q	Q	Q	Q	Q	Q	Q
115	Q	Q	Q	Q	Q	Q	Q	Q
116	Q	Q	Q	Q	Q	Q	Q	Q
117	Q	Q	Q	Q	Q	Q	Q	Q
118	Q	Q	Q	Q	Q	Q	Q	Q
119	Q	Q	Q	Q	Q	Q	Q	Q
120	Q	Q	Q	Q	Q	Q	Q	Q
121	Q	Q	Q	Q	Q	Q	Q	Q
122	Q	Q	Q	Q	Q	Q	Q	Q
123	Q	Q	Q	Q	Q	Q	Q	Q
124	Q	Q	Q	Q	Q	Q	Q	Q
125	Q	Q	Q	Q	Q	Q	Q	Q
126	Q	Q	Q	Q	Q	Q	Q	Q
127	Q	Q	Q	Q	Q	Q	Q	Q
128	Q	Q	Q	Q	Q	Q	Q	Q
129	Q	Q	Q	Q	Q	Q	Q	Q
130	Q	Q	Q	Q	Q	Q	Q	Q
131	Q	Q	Q	Q	Q	Q	Q	Q
132	Q	Q	Q	Q	Q	Q	Q	Q
133	Q	Q	Q	Q	Q	Q	Q	Q
134	Q	Q	Q	Q	Q	Q	Q	Q
135	Q	Q	Q	Q	Q	Q	Q	Q
136	Q	Q	Q	Q	Q	Q	Q	Q
137	Q	Q	Q	Q	Q	Q	Q	Q
138	Q	Q	Q	Q	Q	Q	Q	Q
139	Q	Q	Q	Q	Q	Q	Q	Q
140	Q	Q	Q	Q	Q	Q	Q	Q
141	Q	Q	Q	Q	Q	Q	Q	Q
142	Q	Q	Q	Q	Q	Q	Q	Q
143	Q	Q	Q	Q	Q	Q	Q	Q
144	Q	Q	Q	Q	Q	Q	Q	Q
145	Q	Q	Q	Q	Q	Q	Q	Q
146	Q	Q	Q	Q	Q	Q	Q	Q
147	Q	Q	Q	Q	Q	Q	Q	Q
148	Q	Q	Q	Q	Q	Q	Q	Q
149	Q	Q	Q	Q	Q	Q	Q	Q
150	Q	Q	Q	Q	Q	Q	Q	Q
151	Q	Q	Q	Q	Q	Q	Q	Q
152	Q	Q	Q	Q	Q	Q	Q	Q
153	Q	Q	Q	Q	Q	Q	Q	Q
154	Q	Q	Q	Q	Q	Q	Q	Q
155	Q	Q	Q	Q	Q	Q	Q	Q
156	Q	Q	Q	Q	Q	Q	Q	Q
157	Q	Q	Q	Q	Q	Q	Q	Q
158	Q	Q	Q	Q	Q	Q	Q	Q
159	Q	Q	Q	Q	Q	Q	Q	Q
160	Q	Q	Q	Q	Q	Q	Q	Q

[illegible]

	490										500										510										520										530										540										550										560																													
80	[Complex grid of symbols and numbers for row 80]																																																																																																			
90	[Complex grid of symbols and numbers for row 90]																																																																																																			
100	[Complex grid of symbols and numbers for row 100]																																																																																																			
110	[Complex grid of symbols and numbers for row 110]																																																																																																			
120	[Complex grid of symbols and numbers for row 120]																																																																																																			
130	[Complex grid of symbols and numbers for row 130]																																																																																																			
140	[Complex grid of symbols and numbers for row 140]																																																																																																			
150	[Complex grid of symbols and numbers for row 150]																																																																																																			
160	[Complex grid of symbols and numbers for row 160]																																																																																																			

[illegible]



[illegible]

	70	80	90	100	110	120	130	140
160	1	n	n	n	n	n	n	n
170	1	n	n	n	n	n	n	n
180	1	n	n	n	n	n	n	n
190	1	n	n	n	n	n	n	n
200	1	n	n	n	n	n	n	n
210	1	n	n	n	n	n	n	n
220	1	n	n	n	n	n	n	n
230	1	n	n	n	n	n	n	n
240	1	n	n	n	n	n	n	n

	140	150	160	170	180	190	200	210
160	Ω	Ω	Ω	Ω	Ω	Ω	Ω	Ω
170	Ω	Ω	Ω	Ω	Ω	Ω	Ω	Ω
180	Ω	Ω	Ω	Ω	Ω	Ω	Ω	Ω
190	Ω	Ω	Ω	Ω	Ω	Ω	Ω	Ω
200	Ω	Ω	Ω	Ω	Ω	Ω	Ω	Ω
210	Ω	Ω	Ω	Ω	Ω	Ω	Ω	Ω
220	Ω	Ω	Ω	Ω	Ω	Ω	Ω	Ω
230	Ω	Ω	Ω	Ω	Ω	Ω	Ω	Ω
240	Ω	Ω	Ω	Ω	Ω	Ω	Ω	Ω

[illegible]

[illegible]

	350	360	370	380	390	400	410	420
160	350	360	370	380	390	400	410	420
170								
180								
190								
200								
210								
220								
230								
240								

	420	430	440	450	460	470	480	490
160	2	n	7	n	n	n	n	n
170	7	7	7	7	7	7	7	7
180	7	7	7	7	7	7	7	7
190	7	7	7	7	7	7	7	7
200	7	7	7	7	7	7	7	7
210	7	7	7	7	7	7	7	7
220	7	7	7	7	7	7	7	7
230	7	7	7	7	7	7	7	7
240	7	7	7	7	7	7	7	7

[illegible]





[illegible]

	70	80	90	100	110	120	130	140
240	Ω	6	Ω	Ω	Ω	Ω	Ω	Ω
250	Ω	6	Ω	Ω	Ω	Ω	Ω	Ω
260	Ω	6	Ω	Ω	Ω	Ω	Ω	Ω
270	Ω	6	Ω	Ω	Ω	Ω	Ω	Ω
280	Ω	6	Ω	Ω	Ω	Ω	Ω	Ω
290	Ω	6	Ω	Ω	Ω	Ω	Ω	Ω
300	Ω	6	Ω	Ω	Ω	Ω	Ω	Ω
310	Ω	6	Ω	Ω	Ω	Ω	Ω	Ω
320	Ω	6	Ω	Ω	Ω	Ω	Ω	Ω

	140	150	160	170	180	190	200	210
240	★	★	★	★	★	★	★	★
250	★	★	★	★	★	★	★	★
260	★	★	★	★	★	★	★	★
270	★	★	★	★	★	★	★	★
280	★	★	★	★	★	★	★	★
290	★	★	★	★	★	★	★	★
300	★	★	★	★	★	★	★	★
310	★	★	★	★	★	★	★	★
320	★	★	★	★	★	★	★	★

[illegible]



[illegible]

[illegible]



	490	500	510	520	530	540	550	560
240	n	z	z	z	z	z	z	z
250	z	z	z	z	z	z	z	z
260	z	z	z	z	z	z	z	z
270	z	z	z	z	z	z	z	z
280	z	z	z	z	z	z	z	z
290	z	z	z	z	z	z	z	z
300	z	z	z	z	z	z	z	z
310	z	z	z	z	z	z	z	z
320	z	z	z	z	z	z	z	z



[illegible]

[illegible]

	140	150	160	170	180	190	200	210
320	3	3	3	3	3	3	3	3
330	U	3	3	3	3	3	3	3
340	3	3	3	3	3	3	3	3
350	U	3	3	3	3	3	3	3
360	3	3	3	3	3	3	3	3
370	U	3	3	3	3	3	3	3
380	3	3	3	3	3	3	3	3
390	U	3	3	3	3	3	3	3
400	3	3	3	3	3	3	3	3

[illegible]

[illegible]

[illegible]



	420	430	440	450	460	470	480	490
320	420	430	440	450	460	470	480	490
330								
340								
350								
360								
370								
380								
390								
400								

	490	500	510	520	530	540	550	560
320	490	500	510	520	530	540	550	560
330	570	580	590	600	610	620	630	640
340	650	660	670	680	690	700	710	720
350	730	740	750	760	770	780	790	800
360	810	820	830	840	850	860	870	880
370	890	900	910	920	930	940	950	960
380	970	980	990	1000	1010	1020	1030	1040
390	1050	1060	1070	1080	1090	1100	1110	1120
400	1130	1140	1150	1160	1170	1180	1190	1200

	560	570	580	590	600
320	1	2	3	4	5
321	6	7	8	9	10
322	11	12	13	14	15
323	16	17	18	19	20
324	21	22	23	24	25
325	26	27	28	29	30
326	31	32	33	34	35
327	36	37	38	39	40
328	41	42	43	44	45
329	46	47	48	49	50
330	51	52	53	54	55
331	56	57	58	59	60
332	61	62	63	64	65
333	66	67	68	69	70
334	71	72	73	74	75
335	76	77	78	79	80
336	81	82	83	84	85
337	86	87	88	89	90
338	91	92	93	94	95
339	96	97	98	99	100
340	101	102	103	104	105
341	106	107	108	109	110
342	111	112	113	114	115
343	116	117	118	119	120
344	121	122	123	124	125
345	126	127	128	129	130
346	131	132	133	134	135
347	136	137	138	139	140
348	141	142	143	144	145
349	146	147	148	149	150
350	151	152	153	154	155
351	156	157	158	159	160
352	161	162	163	164	165
353	166	167	168	169	170
354	171	172	173	174	175
355	176	177	178	179	180
356	181	182	183	184	185
357	186	187	188	189	190
358	191	192	193	194	195
359	196	197	198	199	200
360	201	202	203	204	205
361	206	207	208	209	210
362	211	212	213	214	215
363	216	217	218	219	220
364	221	222	223	224	225
365	226	227	228	229	230
366	231	232	233	234	235
367	236	237	238	239	240
368	241	242	243	244	245
369	246	247	248	249	250
370	251	252	253	254	255
371	256	257	258	259	260
372	261	262	263	264	265
373	266	267	268	269	270
374	271	272	273	274	275
375	276	277	278	279	280
376	281	282	283	284	285
377	286	287	288	289	290
378	291	292	293	294	295
379	296	297	298	299	300
380	301	302	303	304	305
381	306	307	308	309	310
382	311	312	313	314	315
383	316	317	318	319	320
384	321	322	323	324	325
385	326	327	328	329	330
386	331	332	333	334	335
387	336	337	338	339	340
388	341	342	343	344	345
389	346	347	348	349	350
390	351	352	353	354	355
391	356	357	358	359	360
392	361	362	363	364	365
393	366	367	368	369	370
394	371	372	373	374	375
395	376	377	378	379	380
396	381	382	383	384	385
397	386	387	388	389	390
398	391	392	393	394	395
399	396	397	398	399	40

[illegible]

	70	80	90	100	110	120	130	140
400	+	+	+	+	+	+	+	+
410	+	+	+	+	+	+	+	+
420	+	+	+	+	+	+	+	+
430	+	+	+	+	+	+	+	+
440	+	+	+	+	+	+	+	+
450	+	+	+	+	+	+	+	+
460	+	+	+	+	+	+	+	+
470	+	+	+	+	+	+	+	+
480	+	+	+	+	+	+	+	+

	140	150	160	170	180	190	200	210
400	♣R	♠R	♠R	♠R	♠R	♠R	♠R	♠R
410	♣U	♠U	♠U	♠U	♠U	♠U	♠U	♠U
420	♣Y	♠Y	♠Y	♠Y	♠Y	♠Y	♠Y	♠Y
430	♣L	♠L	♠L	♠L	♠L	♠L	♠L	♠L
440	♣M	♠M	♠M	♠M	♠M	♠M	♠M	♠M
450	♣N	♠N	♠N	♠N	♠N	♠N	♠N	♠N
460	♣O	♠O	♠O	♠O	♠O	♠O	♠O	♠O
470	♣P	♠P	♠P	♠P	♠P	♠P	♠P	♠P
480	♣Q	♠Q	♠Q	♠Q	♠Q	♠Q	♠Q	♠Q

[illegible]

[illegible]

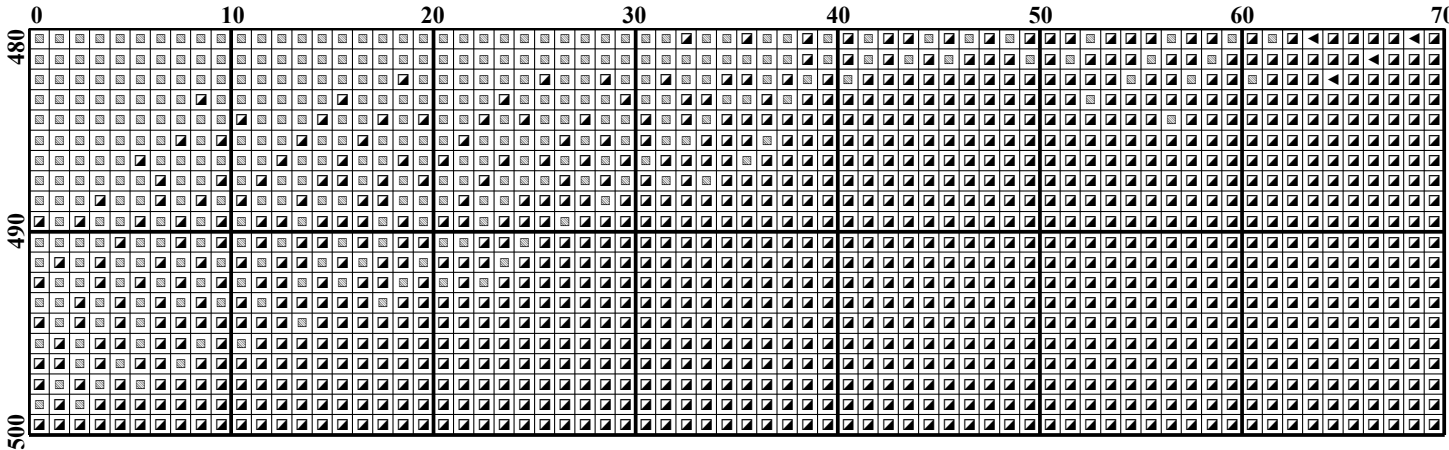


	350	360	370	380	390	400	410	420
400	350	360	370	380	390	400	410	420
410	400	410	420	430	440	450	460	470
420	410	420	430	440	450	460	470	480
430	420	430	440	450	460	470	480	
440	430	440	450	460	470	480		
450	440	450	460	470	480			
460	450	460	470	480				
470	460	470	480					
480	470	480						

	420	430	440	450	460	470	480	490
400	∕	∕	∕	∕	∕	∕	∕	∕
410	∕	∕	∕	∕	∕	∕	∕	∕
420	∕	∕	∕	∕	∕	∕	∕	∕
430	∕	∕	∕	∕	∕	∕	∕	∕
440	∕	∕	∕	∕	∕	∕	∕	∕
450	∕	∕	∕	∕	∕	∕	∕	∕
460	∕	∕	∕	∕	∕	∕	∕	∕
470	∕	∕	∕	∕	∕	∕	∕	∕
480	∕	∕	∕	∕	∕	∕	∕	∕
490	∕	∕	∕	∕	∕	∕	∕	∕

[illegible]

[illegible]



[illegible]

[illegible]

[illegible]



[illegible]

[illegible]

[illegible]

[illegible]

[illegible]